

GRID GUARD GRID-GUARD 40 SERIES

POWER STATION MODULE

Hourly Solar Production

20,720 Watts +10% to 30% production

Usable Battery Storage @ 50% DOD

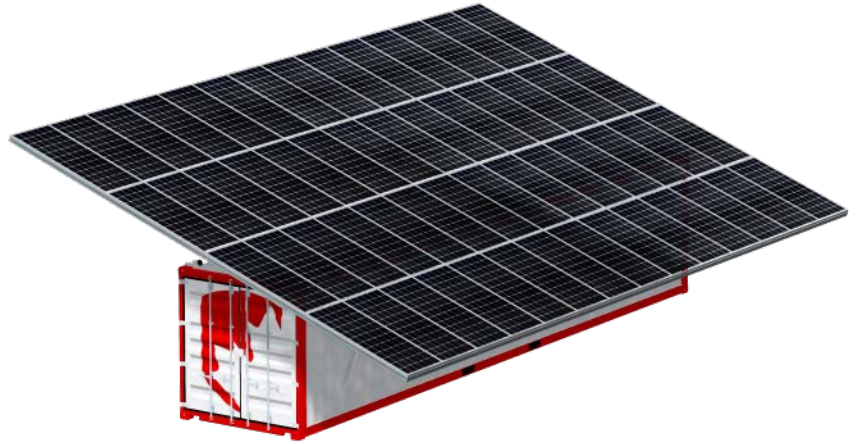
430 kilowatt-hours

Hybrid Inverter

200 kilowatts

Auxiliary Generator (optional)

20 to 100 kilowatts



SOLAR INPUT POWER

20.72 kWp | 370W Monocrystalline Bifacial Solar Panels

Bifacial modules produce solar power from both sides of the panel, yielding a 10% to 30% increase in production.

INVERTER OUTPUT POWER

200 Kilowatt Hours

Hybrid Inverter | 120/220/230/240VAC - 50/60Hz
Single or Three-Phase

STORAGE POWER

430kWh of usable power

4,500 Cycles @ 50% Depth of Depletion
Maintenance-Free, Sealed Lead Acid Carbon batteries

PHYSICAL DIMENSIONS

Weight	30,277kg	66,750lbs
Module Length	12.19m	40ft
Total Length	14.1m	46.25ft
Module Height	2.59m	8.5ft
Total Height	4.6m	15.1ft
Module Width	2.43m	8ft
Total Width	8.05m	26.4ft
Area needed	120m²	1,295ft²

